



# HDREAL™ IMAGING SYSTEM

## User's Manual



**VIRTUANCE**  
BRILLIANT IMAGES FOR REAL ESTATE

## INTRODUCTION

Virtuance has developed one of the most advanced real estate imaging platforms in the world. We launched HDReal™ as the backbone of our full service operation in Denver and in less than two years we grew to be the highest-volume provider in the state. HDReal™ has processed thousands of properties of all types and prices, and has been proven again and again to move properties faster and for higher prices than any other photography processing solution in the market.

You can now harness the full power and performance of HDReal™ for your own real estate shoots. We've made the process easy and simple, and have prepared this handbook to guide you through the steps. If you ever have any questions that are not addressed in this Handbook or would like to provide feedback, call us anytime at (303) 482-2999 or email us at [info@virtuance.com](mailto:info@virtuance.com).

### Company History and Information

Virtuance was founded in Denver in 2010 by Jeff Corn (CEO) and Ryel Kestano (Creative Director) to deliver the revolutionary HDReal™ image processing system to the Denver real estate market. Igor Zlokarnik, PhD (Chief Scientist) came on board soon after to greatly expand and refine the system as well as design a host of supportive applications and solutions. Amanda Jung is our Director of Client Relations and is available anytime to support our clients in whatever way necessary.

We manage a leading full-service operation in Colorado that serves real estate professionals of all kinds in both residential and commercial industries. Our hugely talented in-house photography team has provided us with extensive valuable feedback that has gone toward improving the processing system and uncovered many of the tips and techniques included here in this handbook.



## SOFTWARE AND TECHNOLOGY

### HDReal

This groundbreaking automated image processing technology is at the core of our photography services and empowers you to creating spectacular imagery easily and effectively. Using your bracketed exposures as source material, HDReal™ automatically merges the exposures and applies a series of enhancements to generate images that are of excellent quality and marketability. All images are reviewed by our in-house image processing specialists to ensure that each image passes the rigorous HDReal™ standard of quality.

### Tagger

HDReal™ depends on certain tags associated with each image to determine the most effective processing workflow to apply. We've built a proprietary software application called Tagger for this purpose. Instructions for downloading and using Tagger are described later in the guide.

## EQUIPMENT

### Camera and Settings

Required settings:

- **All images shot in AEB mode (Auto Exposure Bracketing). Almost all digital SLRs have this function - check your camera's manual for specific instructions**
- **All exposures that make up a bracketed sequence must be captured with a single press of the shutter release button, whether on-camera or on a trigger (both press-release and press-hold trigger techniques are acceptable)**

Recommended settings for AEB mode:

- **Minimum of a 6 stop range between lowest and highest exposures**
- **Maximum of 2 EVs between each exposure**
- **The ideal sequence is 5 exposures, 1.5 to 2 EVs apart (6 to 8 total EVs apart)**
- **Certain Canon users can install Magic Lantern to increase the bracketing range (check [magiclantern.fm](http://magiclantern.fm) for more info)**

We also recommend setting up your camera with the following settings:

- **Daytime ISO** - 400
- **Format** - JPEG
- **Resolution** - Between 6 and 12 megapixels
- **Daytime Aperture** - 8.0 (aperture setting must be the same for all exposures in each sequence)
- **White Balance** - Auto (some cameras produce overly warm tones in certain lighting conditions. If your bracketed exposures are too warm, use a custom WB setting appropriate for your camera and the available lighting)
- **Image Stabilization/Anti-Shake** - Off
- **All in-camera lens corrections and processing** - Off

You can still use HDReal™ with alternate settings of your choice, but these recommended settings will produce the best result.

**Note to Magic Lantern users** - If you are using ML on a Canon DSLR, make sure that you switch HDR Bracketing to ON, and never switch Post scripts to OFF.

## Memory Cards

We recommend at least 8GB cards. For the Tagger software to work as efficiently as possible, you should use a separate card for each shoot.

## Required Equipment

- **Tripod** - All shots need to be taken from a tripod so that the camera is motionless while capturing the bracketed sequences. We recommend using a ball head for easy and rapid adjustments but any tripod head is fine

## Optional Equipment

- **Pano Head** - Panos should be shot with a pano head. Both the tripod and the pano head should be level before starting the sequence. Use the bubble level on the tripod first, then level the pano head using its own bubble level
- **Cable Release** - To avoid any blur from a shutter press, we recommend that you use a cable release or remote trigger, and shoot all bracketed exposures with a single press of the cable release to increase speed and efficiency through a shoot (if your camera has setting that supports it)
- **Lens Pen** - We recommend that you regularly use a lens pen to keep your lens clear and clean



## TIPS AND TECHNIQUES

Drawing on our experience shooting thousands of properties of every type and price, we've put together the following tips and techniques to help you capture the best images for any property you shoot.

### General Interior Tips

- Keep your lens glare shield on at all times, including interior shots
- Turn off all ceiling fans
- Turn off all TVs
- Watch for reflections. Mirrors, paintings, TVs, oven and microwave doors, and shower doors are common culprits
- Be on the lookout for glare in any shots. This may come from reflections, snow, direct sunlight, basically anywhere there is a lot of white light. Reposition your composition to avoid glare in your shots
- Shower curtains should be partially opened to show off tile work and fixtures. Move toiletries so they are out of the shot
- Lower all toilet lids
- Turn on gas fireplaces if present
- If there are objects that detract from an appealing photo and they can be moved fairly easily, go ahead and do so. Examples include trash cans, cleaning products, items of clothing, towels, bath mats, toiletries, remote controls, etc.
- We recommend that you never shoot any people in shots. If there are people moving through a shot, wait until they have passed through
- Turn lamp shade seams away from the camera so that they are not visible in the shots

### Lighting

All available lighting in a property should be turned on, including ceiling lighting, table lamps, floor lamps, recessed lighting in built-in cabinetry, under-cabinet lighting, fan lights, exterior and landscape lighting, and all other sources of lighting.

### Contrast Range

HDReal™ works most effectively when the contrast range of a scene is within 10 stops. You can determine the contrast range of a scene with a light meter or by capturing single exposures at the top and bottom of the range and reviewing the associated exposure settings. If the range exceeds 10 stops then we recommend using the following suggestions to narrow the contrast range back within an optimal range.

#### **Raising the interior light:**

- Turn all interior lights on at full brightness
- Let sun rays come in through windows - only possible when shooting on a sunny day and shooting a space where sun rays can come into the space. The rays that strike the floors, walls and furniture inside the space effectively act as natural strobes, raising the interior lighting

#### **Reducing the exterior light:**

- Shoot at dawn or twilight or on an overcast day for particularly dark interiors
- Use window treatments

#### **Strategies for using window treatments to reduce exterior light:**

- Slatted blinds - These should be lowered all the way to the bottom and closed about halfway, with slats pointing up to brighten up the ceiling, which then reflects light down to light up the space
- Fabric blinds - These should be lowered to cover the most reflective parts of the exterior view (typically sky but could also include highly reflective roofs or snow on ground), but left open enough to view out-

side elements that are not highly reflective

- Curtains - Keep them at least halfway open and compose your shots so you do not include (or at least minimize) highly reflective elements visible through the window. Open or close the curtains (only up to halfway) to try to cover any highly reflective elements.
- No treatments - Try to compose shots to avoid capturing highly reflective elements visible through the window.

### Metering

Often the camera will meter a room very differently depending on whether you are composing away from or toward windows - when there are windows in the composition, the camera will meter for the brighter exterior light and consequently make the interior darker. We recommend that you review the last (typically brightest) exposure in camera after every capture to make sure that the metering is consistent. If it is too dark then you can adjust your exposure correction up 1 or 2 EVs to compensate.

### General Exterior Tips

- No garbage and recycle bins should be visible in any shots
- Put away hoses, toys, boxes, and other distracting and/or unappealing items
- Your best shots are usually with the sun behind you or to the side, up to a 90 degree angle. From within these angles, the sun lights up the subject elements in a composition and colors are nicely saturated and eye-catching
- If there is a chance of the sun hitting the lens, check the lens and put your hand up to block the sun if necessary
- Walk the full extent of the land around the property to scout out and capture the best shots

### Shooting Panos

We recommend that you make the following considerations when choosing your pano setup location:

- Select a location that ensures proper stitching of the panos when being processed. If there are any stretches of blank wall or other featureless planes that make up more than about a fifth of the 360 degree circle around the camera, the stitching software cannot match up control points to stitch one image with the adjacent image
- The most typical pano setup locations are the living room or family room (whichever is most notable), kitchen, master bedroom, and backyard.
- Your tripod and pano head must be level
- You should aim to take 5 exposures in a 360 degree circle. Move the pano head 72 degrees between exposures



## POST-SHOOT PROCEDURES

### Tagger Software

Our Tagger software is designed to apply space names and other important tags to your images and upload the tagged images to our processing servers. We recommend that you use the Tagger immediately after each shoot so that you can easily recall the space names, but it is up to you if you'd rather wait until later to do so.

You can download the tagger using this link: <http://virtuance.com/tagger>. The Tagger is compatible with both PCs and Macs. Continue with Step 1 below after you have installed the Tagger. The installation password will be provided to you by admin.

### Keyboard Shortcuts

- Tab - moves the active field in the forward direction
- Shift-Tab - moves the active field in the backward direction
- Up/Down/Left/Right arrow - moves the selection correspondingly in a list
- Shift-Up/Down/Left/Right arrow - adds to the selection correspondingly in a list
- Page Down/Up - moves the scroll pane and selection up/down by a full screen
- Spacebar - activates a button or checklist
- Enter - activates the main acceptance button of a dialog ("OK", "Apply", etc.) regardless of which component is active
- Backspace/Delete/Clear - deletes the selected images when the scroll pane is active

**Step 1** - Insert your memory card and launch the Tagger. If this is the first time you are using the Tagger, you will be presented with the Edit User Account window. Enter the Username and Password provided to you by admin.

**Step 2** - Select New Session from the File menu and fill out all the requested information. Advance from one text field to the next via the Tab key. Click OK. The Tagger will then display a single exposure from each bracketing sequence. You can change which exposure is displayed in the Edit > Settings menu.

**Step 3** - Select all of the images that share the same tags with the first image (i.e if the first 3 images are "Exterior - Front, then select all those). You select multiple images by pressing Shift while moving the lead of the selection with the arrow keys.

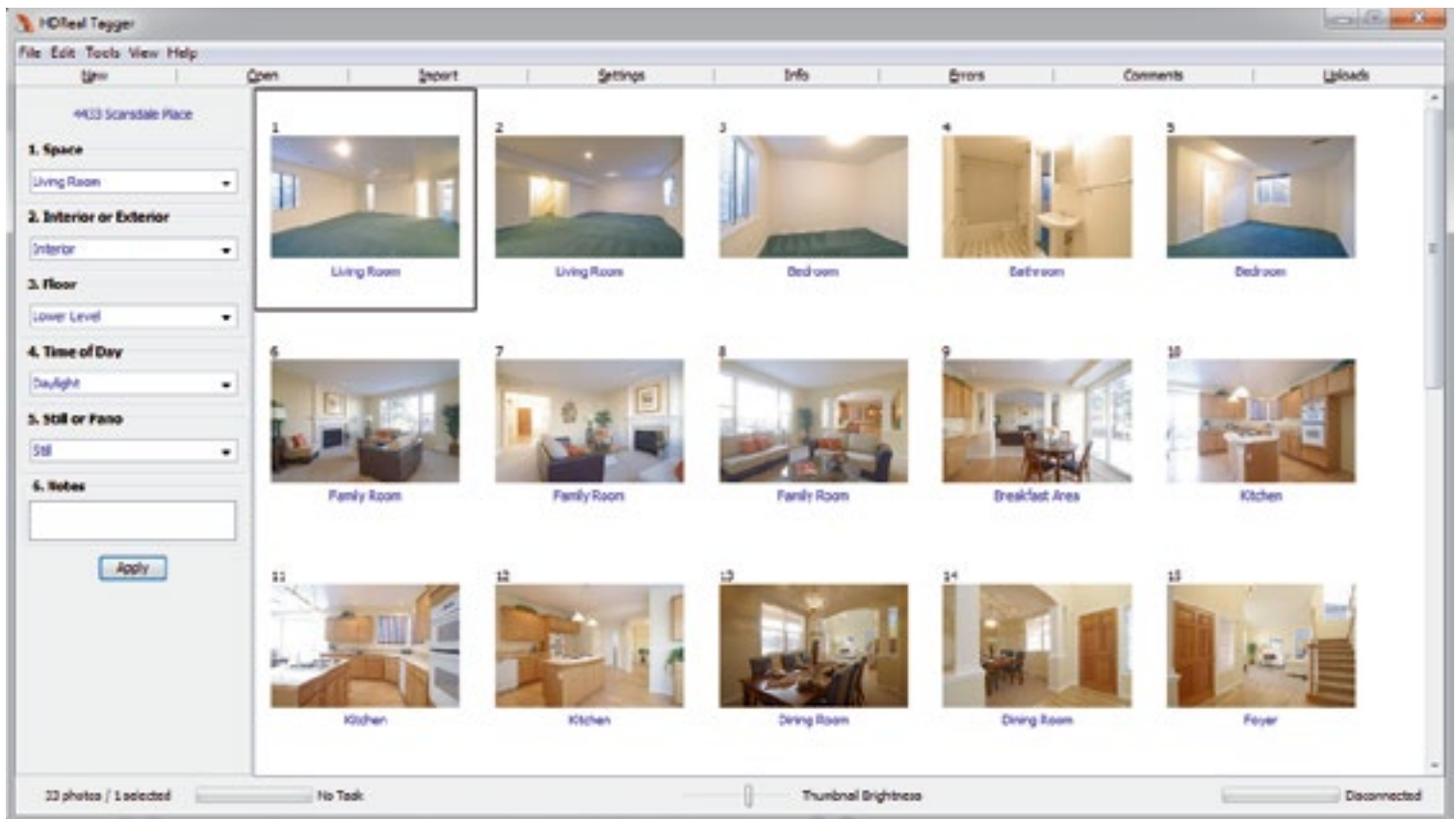
**Step 4** - Start typing the image name. You may use all lower-case letters. As you type, an auto-completion function will complete the entire text for you if it partially matches any of the available choices. You can also use the up/down arrows to move the selection up and down the list of available choices (listed in alphabetical order).

**Step 5** - Activate the "Apply" button via the Enter key (on Mac: Return). The file names of the selected images will change their color from black to blue and the next image in the scroll pane will be automatically selected.

**Step 6** - Use the Backspace/Delete/Clear key to delete any unwanted images.

The screenshot shows a 'New Session' dialog box with the following fields and sections:

- Property Information (optional)**
  - Client:
  - Address:
  - City:
  - State:
  - ZIP Code:
  - Type:
- Folder To Export Photos To**
  - Name:
  - Parent Folder:
- Folder To Import Photos From**
  - Folder:
- Buttons:



**Step 7** - Once you have tagged all the images, the error checker will run automatically. If a failure can be tracked to a set of images, the list will include their filenames as hyperlinks. Clicking on a hyperlink selects the corresponding image in the scroll pane and displays its tags in the tagging panel.

**Step 8** - Go to the Tools > Uploads menu item. Click Start for all queued shoots.

### Delivery

You will receive an email notification when your images are ready for delivery. The email will include a download link and instructions.

**If you have any questions or comments, please get in touch with us anytime.  
We are open M-F 9am to 5pm, Mountain Time:**

**303.482.2999  
info@virtuance.com**